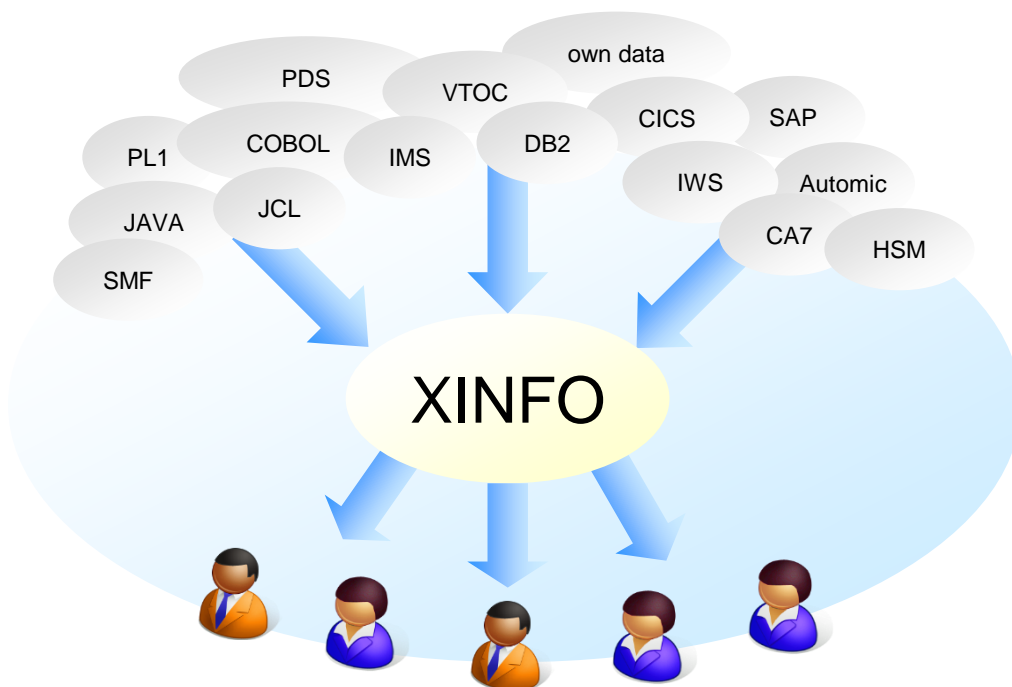


XINFO

The IT Information System

XINFO is a complete, open, cross-referencing tool for accessing data from a wide variety of z/OS and distributed sources, such as SMF, JCL, IWS, CONTROL-M, Automic (UC4), CA-7, RMM, VTOC, COBOL, PL/1, Java, Assembler, DB2, etc.

XINFO utilises a simple, uniform interface that organises your data clearly, so you can review any information "at a glance" with amazing speed and accuracy.



XINFO - The IT Information System

XINFO lets you create your own queries or use the pre-defined ones provided. Users require no programming knowledge. You can 'jump' from data source to data source (and back again!). Panels can be tailored to meet individual requirements

XINFO is fast to install, runs under ISPF or Windows, and is easy to learn and use. XINFO saves time and money searching for data and is great for test environments and production.

XINFO

The IT Information System

Areas of Application

XINFO is the IT Information System for anyone involved with batch production:

- Production planning and control
- Application programmers
- System Administrators
- Project teams
- Non IT departments

Data sources

XINFO analyses all systems which are important for the daily work of the users:

- JCL (Jobs and Procedures)
- SMF (Jobs, Steps, File access)
- Load modules
- Scheduler (IWS, Control-M z/OS and ds, CA-7, Automic (UC4), Streamworks, Beta92-EJM, etc.)
- DB Systems and TP Monitors (DB2, IMS, CICS)
- Output (BETA93, CA-Deliver, Control-D)
- Space (VTOC, SMS, HSM, RMM, CA-1, CA-Disk)
- Source (COBOL, PL/1, C, Easytrieve, Natural, Java, Assembler)
- Distributed Systems (file content)

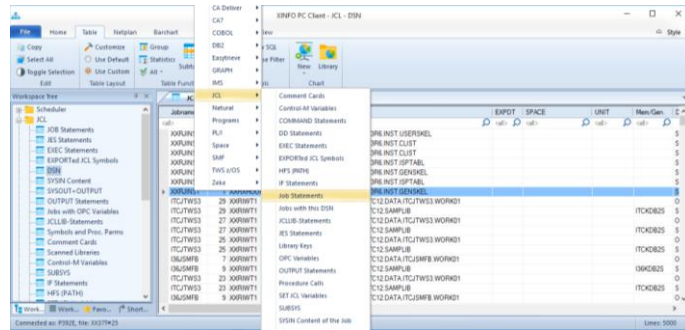
Openness

XINFO is an open and modular system which can be expanded to meet your needs:

- All data can be easily integrated
- Each panel and list can be tailored to your own needs
- Additional components can be acquired subsequently and added

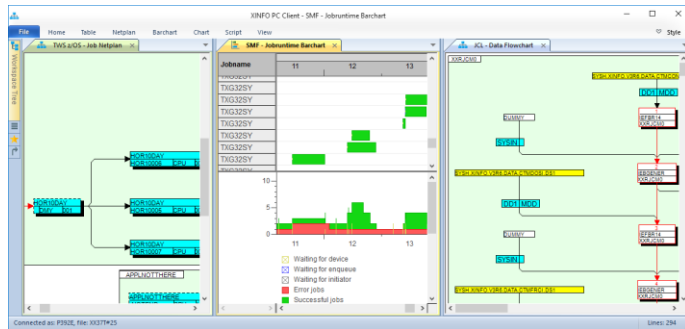
Data center documentation

All reports and graphics can be created automatically.



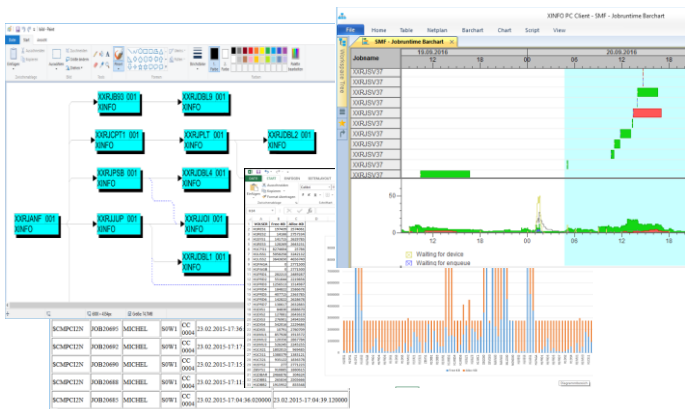
Dialogs

XINFO's PC Client enables you to enter selection criteria in predefined panels and display the results in tables. Of course there is also an ISPF Dialog.



Graphics

XINFO represents your data as clear graphics. Because: A picture is worth more than a thousand words!



Representation

XINFO enables you to share your data in various ways: Export Graphics to Word, tables to HTML or Excel, or distribute jobflows via the Intranet.